

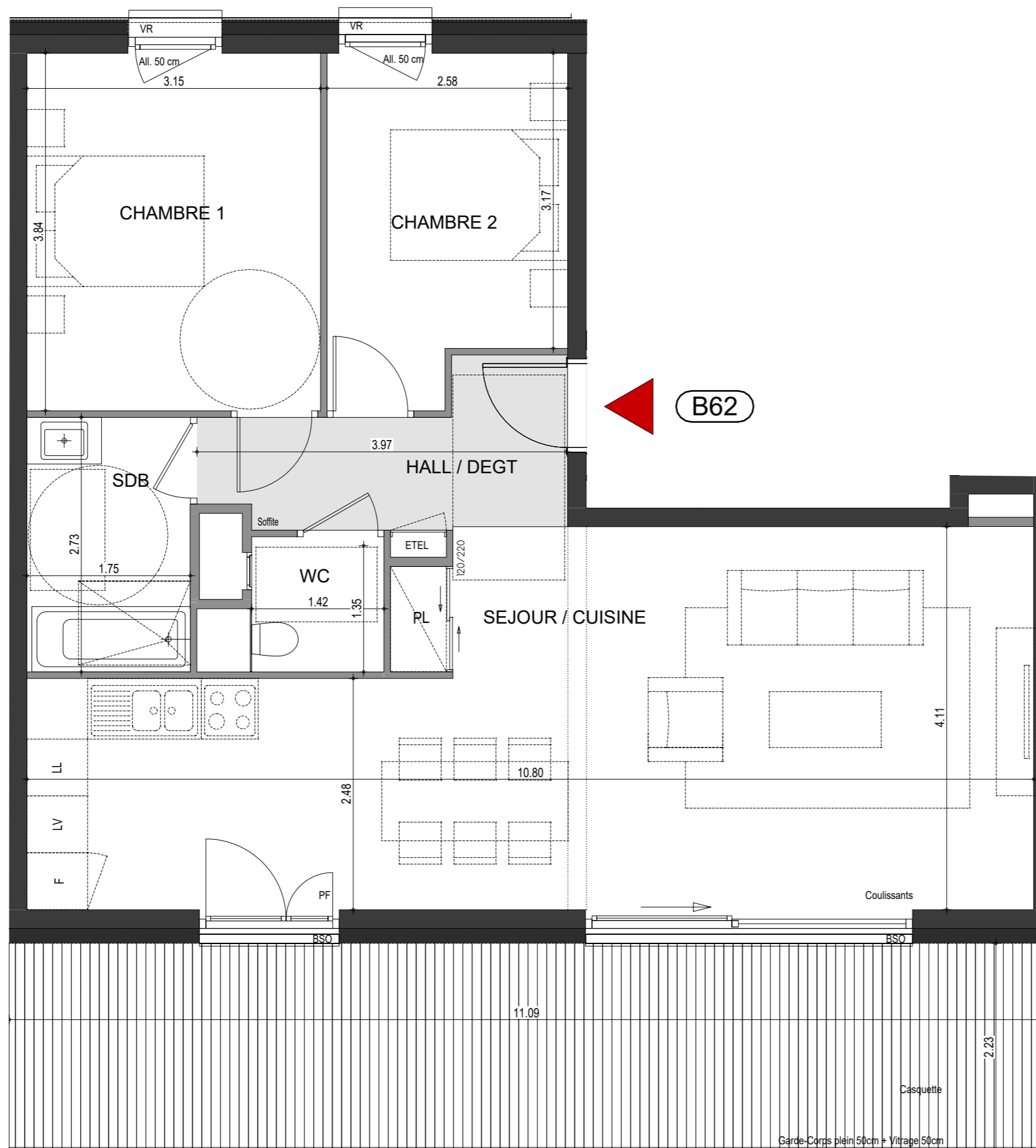
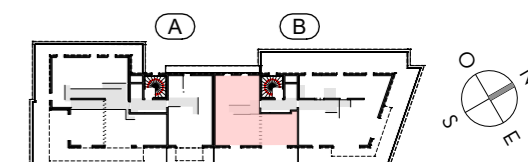
L'ÉVEIL

Vivre dans un parc, habiter la ville

OSTARA

**PLAN DE
PRE-COMMERCIALISATION**

RUE DES CARILLONS
74940 ANNECY



B62

**3 PIECES
HALL B - B62 - R+6**

HALL / DEGT.	6.76 m ²
SEJOUR / CUISINE	35.91 m ²
CHAMBRE 1	12.09 m ²
CHAMBRE 2	9.02 m ²
SDB	4.11 m ²
WC	1.91 m ²
SURFACE TOTALE HABITABLE	69.80 m²
TERRASSE	24.25 m ²
SURFACE TOTALE PRIVATIVE	94.05 m²