

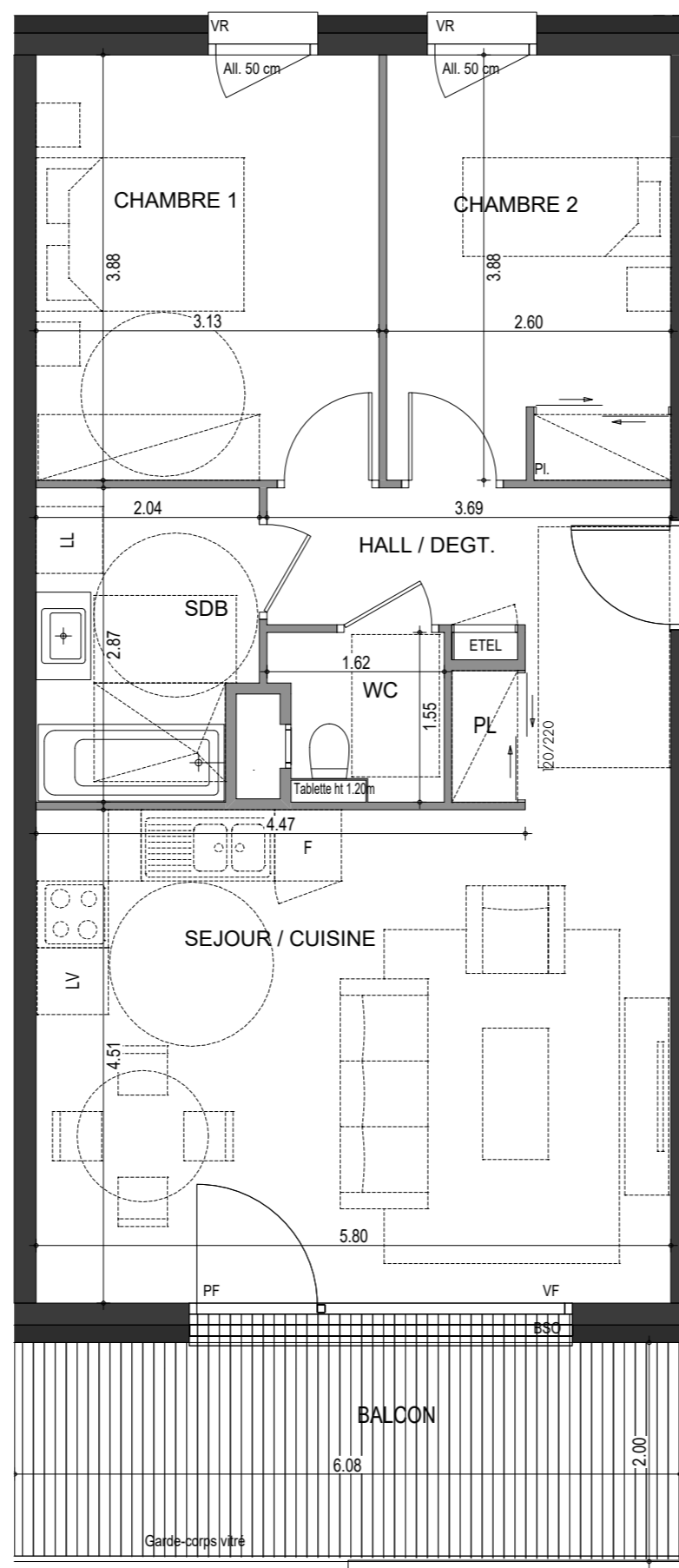
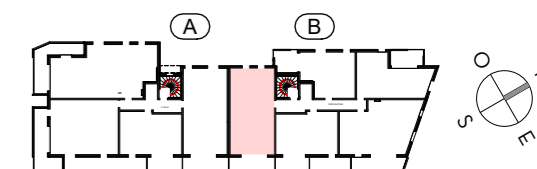
# L'ÉVEIL

*Vivre dans un parc, habiter la ville*

## OSTARA

**PLAN DE  
PRE-COMMERCIALISATION**

RUE DES CARILLONS  
74940 ANNECY



**3 PIECES  
HALL B - B15 - R+1**

HALL / DEGT.	7.66 m <sup>2</sup>
SEJOUR / CUISINE	26.13 m <sup>2</sup>
CHAMBRE 1	12.17 m <sup>2</sup>
CHAMBRE 2	10.04 m <sup>2</sup>
SDB	5.52 m <sup>2</sup>
WC	2.12 m <sup>2</sup>
<b>SURFACE TOTALE HABITABLE</b>	<b>63.64 m<sup>2</sup></b>
BALCON	11.85 m <sup>2</sup>
<b>SURFACE TOTALE PRIVATIVE</b>	<b>75.49 m<sup>2</sup></b>